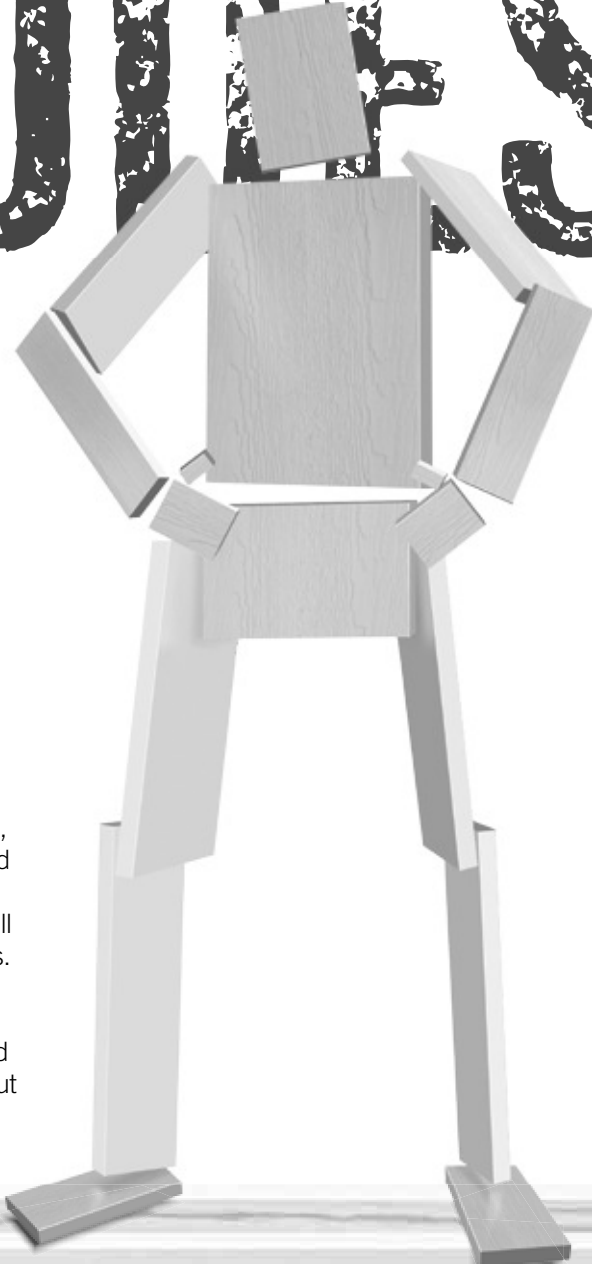


BORN TO BE BADDEST.



SUPERIOR PERFORMANCE IS NO FLUKE.

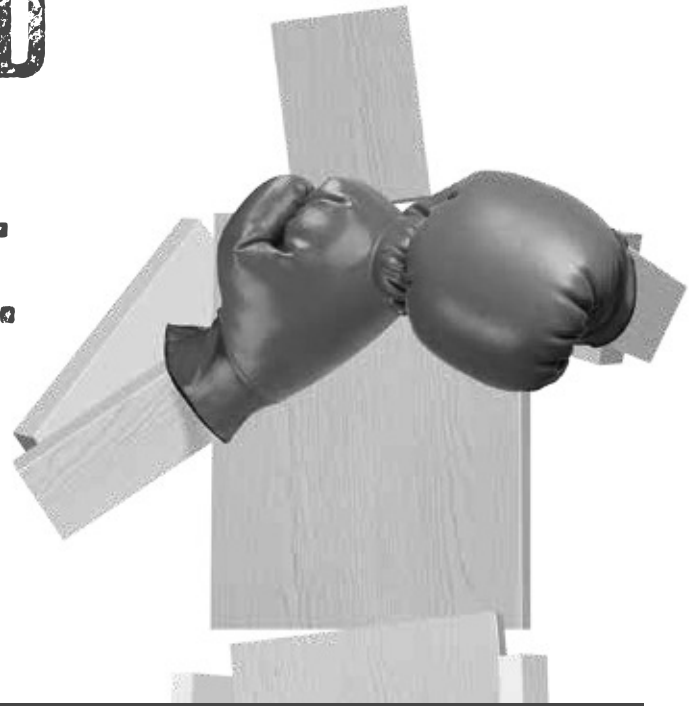
Unlike other materials used for trim these days, MiraTEC® is the one product actually conceived and engineered to do the job. Moisture, rot, termites, checking, splitting and cracking are all challenges it boldly takes head-on and crushes. As the first and only wood composite trim to earn an evaluation report (ESR-3043) from ICC-ES, MiraTEC simply performs to a standard hardboard and OSB cannot. Not by chance, but by design.



MIRATEC®
Treated Exterior Composite TRIM

JELD-WEN
WINDOWS & DOORS

IN HEAD-TO-HEAD COMPETITION, IT'S NO CONTEST.

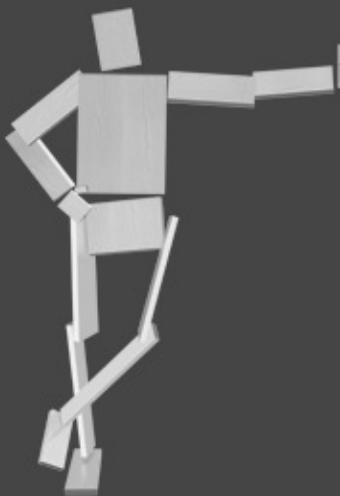


MIRATEC VS PRIMED WOOD TRIM

- MiraTEC has none of wood's frustrating drawbacks.
- MiraTEC doesn't require significant maintenance and replacement, because it resists moisture, rot and termites. Primed wood may be treated, but many do not offer rot and termite protection.
- MiraTEC is a more advanced, engineered material.
- MiraTEC offers consistent density.
- MiraTEC won't warp, split or check over time.
- MiraTEC is one solid piece. Primed wood is normally finger jointed to make longer lengths and edge glued to make the width - with a limited warranty on the glue joints.

MIRATEC VS HARDBOARD/FIBER AND OSB TRIM

- MiraTEC is not laminated.
- MiraTEC has greater moisture resistance which means better long term performance.
- MiraTEC performs up to 9 times better in Weatherability Testing, which evaluates a product's ability to withstand exposure to the elements over time. See chart at right.

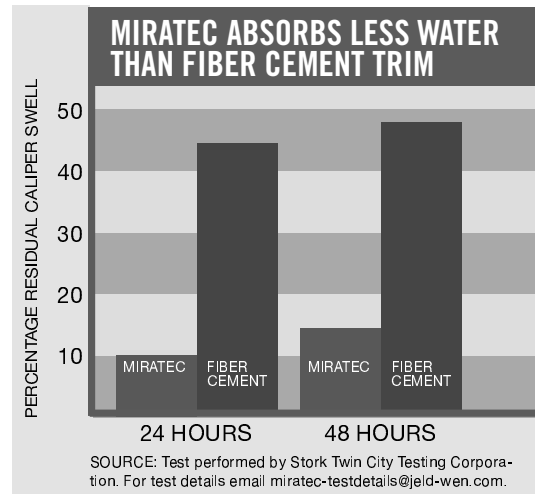


NO OTHER TRIM PERFORMS LIKE MIRATEC.

- >> Resists moisture, rot and termites.
- >> Reversible with clear cedar wood grain texture on one side and smooth on the other.
- >> Easy to handle, machine, cut and nail.
- >> Won't check, split or crack.
- >> Cuts consistently due to uniform product density.
- >> Primed with an ultra-low VOC primer containing a mildewcide.

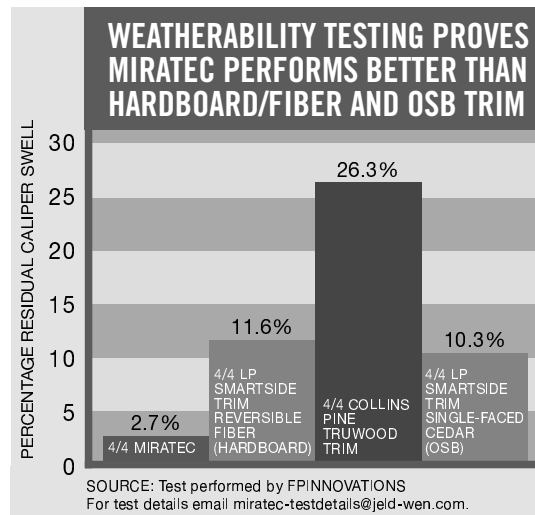
MIRATEC VS FIBER CEMENT TRIM

- MiraTEC has a more authentic wood grain texture.
- MiraTEC is reversible.
- MiraTEC is highly resistant to moisture. Independent tests show fiber cement absorbs five times more water (ASTM 24-Hour Soak Test). See chart at right.
- MiraTEC is 100% silica free. Cutting fiber cement releases silica, a known carcinogen.
- MiraTEC is not brittle or difficult to stack.
- MiraTEC is as easy to handle, cut and nail as wood, requires no special tools.
- MiraTEC is available in widths up to 16" and lengths of 16', takes less time and labor to install.
- MiraTEC is backed by a 50-year limited warranty. Most fiber cement has a 15-year limited warranty.
- MiraTEC costs up to 30% less.



MIRATEC VS PVC TRIM

- MiraTEC has a more authentic wood grain texture.
- MiraTEC accepts all shades of paint beautifully.
- MiraTEC is not prone to thermal expansion.
- MiraTEC is made from sustainable materials and renewable resources.
- MiraTEC costs up to 50% less.



ANYONE CAN TALK PERFORMANCE. MIRATEC PROVES IT.

- ☑ Moisture resistant: As measured by ASTM D1037 for Water Absorption and Thickness Swelling.
- ☑ Rot resistant: Tested per AWPA E16 Field Test for Evaluation of Wood Preservatives to be Used Out of Ground Contact: Horizontal Lap-Joint Method.
- ☑ Termite resistant: Tested per AWPA E7 Standard Method of Evaluating Wood Preservatives by Field Tests with Stakes.



Building code compliant (ESR-3043): MiraTEC is the first and only wood composite trim to earn an evaluation report (ESR-3043) from ICC-ES.



NOTHING'S FRIENDLIER TO THE ENVIRONMENT.

SUSTAINABLE MATERIALS

- No old growth wood is used in the manufacture of MiraTEC trim. It is made from wood that has no commercial timber value and is the byproduct of other operations. This leftover wood is also detrimental to the overall vitality of the forest.

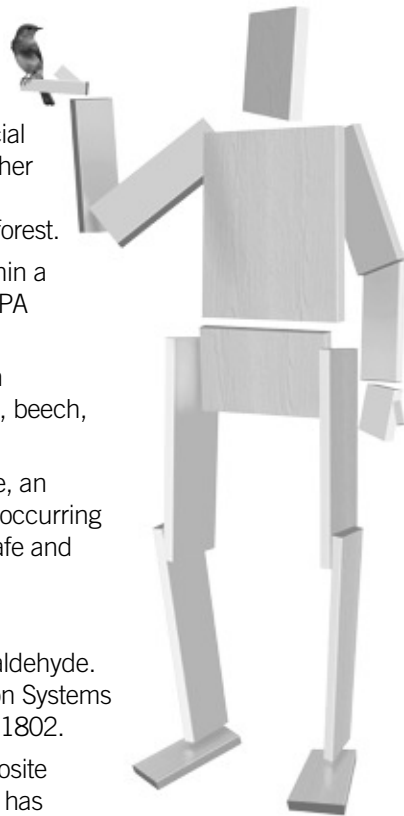
>> All wood comes from an area within a 150-mile radius of the Towanda, PA production facility.

>> JELD-WEN® uses 100% northern hardwoods, which include maple, beech, oak and other species.

- MiraTEC trim is treated with zinc borate, an EPA-registered biocide and a naturally occurring earth mineral that is environmentally safe and ensures protection against termites.

NO ADDED UREA FORMALDEHYDE

- MiraTEC trim has no added urea formaldehyde. This is certified by Scientific Certification Systems under certificate number SCS-NAUF-01802.
- Through repeated testing by the Composite Panel Association (CPA), MiraTEC trim has demonstrated formaldehyde emissions equivalent to background levels found in the environment.



COMPLIES WITH CARB

- MiraTEC trim is acknowledged by the California Air Resources Board's (CARB) Airborne Toxic Control Measure (ATCM) 93120 to utilize exempt status ultra-low emitting formaldehyde (ULEF) resins.

LOW VOC PRIMER

- MiraTEC trim is primed with a low VOC primer containing a mildewcide.

CONTRIBUTES TO GREEN BUILDING PROGRAMS

- MiraTEC trim contributes to industry programs such as LEED and the National Green Building Standard.™

GREAT ATTENTION TO DETAIL.

To bring added detail and dimension to exterior applications, all the benefits of MiraTEC trim are available as primed 16' lengths of conventional 3", 4", 5" and 6" crown moulding profiles. So there's simply no excuse for sacrificing long-lasting performance for greater architectural interest.

SIZE MATTERS.

| 2" MIRATEC BATTEN | 5/8" ACTUAL THICKNESS | | | | 4/4 NOMINAL THICKNESS (3/4" ACTUAL) | | | | 5/4 NOMINAL THICKNESS (1" ACTUAL) | | | |
|-------------------|-----------------------|---------|------------|------|-------------------------------------|---------|------------|------|-----------------------------------|---------|------------|------|
| | SIZE | | 16' PIECES | | SIZE | | 16' PIECES | | SIZE | | 16' PIECES | |
| | NOMINAL | ACTUAL | BUNDLE | UNIT | NOMINAL | ACTUAL | BUNDLE | UNIT | NOMINAL | ACTUAL | BUNDLE | UNIT |
| | 2" x 192" | 2" | 12 | 336 | 2" x 192" | 2" | 12 | 336 | 2" x 192" | 2" | 9 | 252 |
| | 3" x 192" | 2 3/4" | 8 | 320 | 3" x 192" | 2 3/4" | 8 | 320 | 3" x 192" | 2 3/4" | 6 | 240 |
| | 4" x 192" | 3 1/2" | 8 | 240 | 4" x 192" | 3 1/2" | 8 | 240 | 4" x 192" | 3 1/2" | 6 | 180 |
| | 5" x 192" | 4 1/2" | 8 | 200 | 5" x 192" | 4 1/2" | 8 | 200 | 5" x 192" | 4 1/2" | 6 | 150 |
| | 6" x 192" | 5 1/2" | 4 | 160 | 6" x 192" | 5 1/2" | 4 | 160 | 6" x 192" | 5 1/2" | 3 | 120 |
| | 8" x 192" | 7 1/4" | 4 | 120 | 8" x 192" | 7 1/4" | 4 | 120 | 8" x 192" | 7 1/4" | 3 | 90 |
| | 10" x 192" | 9 1/4" | 4 | 100 | 10" x 192" | 9 1/4" | 4 | 100 | 10" x 192" | 9 1/4" | 3 | 75 |
| | 12" x 192" | 11 1/4" | 4 | 80 | 12" x 192" | 11 1/4" | 4 | 80 | 12" x 192" | 11 1/4" | 3 | 60 |
| | 16" x 192" | 15 1/2" | 2 | 60 | 16" x 192" | 15 1/2" | 2 | 60 | 16" x 192" | 15 1/2" | 2 | 42 |

MIRATEC®
Treated Exterior Composite TRIM
BORN TO BE BADDEST.™

1.800.255.0785
miratectrim.com

JELD-WEN
WINDOWS & DOORS

© 2014 JELD-WEN, inc. All rights reserved. All trademarks and service marks (registered and unregistered) shown are owned by or licensed to JELD-WEN, inc. or its affiliates.

